

Metro Parks E-Newsletter

Columbus & Franklin County



feel free!

Children's Garden Day

Sunday, April 27 from 2 to 4 p.m.
Celebrate spring at the annual Children's Garden Day at Inniswood Metro Gardens. The whole family will enjoy exploring the children's garden. For the kids there will be garden-related crafts and activities. For more information about this event call 614.895.6216, Tuesday-Friday, 9 a.m.-2 p.m.

Wood Frog Breeding Program Succeeds

Initial efforts to reintroduce breeding wood frogs to Blacklick Woods and Sharon Woods were recently confirmed to be successful with the discovery of egg masses in vernal pools where relocated egg masses were placed in 2006 and 2007. Wood frogs occurred in both parks until the early 1970s.

More on your Metro Parks

website:

www.metroparks.net

Infoline:

614.508.8000

Telephone:

614.891.0700

Columbus & Franklin County
April 18, 2008

From the Executive Director

New Metro Park Proposed

Metro Parks has signed an agreement with the City of Columbus, Village of New Albany and Plain Township to create a new Metro Park in northeast Franklin County. ([More](#))



Ospreys return to Pickerington Ponds

The Pickerington Ponds osprey pair arrived from their wintering grounds in South America in March. For the third consecutive year the nest platform in Arrowhead Marsh is being used. ([More](#))



Grange Insurance Audubon Center Groundbreaking

Ground-breaking for the new Grange Insurance Audubon Center will take place on Tuesday, April 22. ([More](#))

Walk With A Doc

Mark your calendar for April 26, 2008, when Nationwide Better Health (NBH) sponsors "Walk with a Doc" at Highbanks Metro Park. ([More](#))



Metro Parks E-Newsletter

Columbus & Franklin County



feel
free!

New Metro Park Proposed

Metro Parks has signed an agreement with the City of Columbus, Village of New Albany and Plain Township to create a new Metro Park in northeast Franklin County. Columbus and Plain Township first proposed this park to Metro Parks about five years ago. The township, village and city all see this new park as part of a 'smart growth' strategy that directs development to more appropriate areas while conserving land surrounding the headwaters of Rocky Fork Creek. Columbus and New Albany will be contributing a total of \$10 million in cash and land to Metro Parks to help with the cost of creating the park. The Village of New Albany is donating a 107-acre parcel of land that includes beautiful wetlands.

The proposal sets a goal of a 1200-acre Metro Park. The park won't be designed until it is determined which properties will be acquired. Metro Parks is beginning the acquisition process immediately and hopes to acquire some land this year. It will take a few years to assemble the land before the park is designed and facilities are constructed.

Metro Parks is pleased to be able to partner with other governments in Franklin County to improve our community while conserving parkland for people and wildlife. [Click here to see a map of the proposed park boundary area.](#)

John O'Meara

Metro Parks E-Newsletter

Columbus & Franklin County



feel free!

Ospreys return to Pickerington Ponds

The Pickerington Ponds osprey pair arrived from their wintering grounds in South America in March. For the third consecutive year the nest platform in Arrowhead Marsh is being used. The female appears to be incubating as of April 11th and will remain at the nest while the male forages for fish that he shares with his mate. The male osprey is often seen perching in the dead trees behind the nest. Eggs should hatch sometime in early to mid-May. Because the nest is so large, young ospreys won't be visible until they're several weeks old. Stop at the Glacier Knoll picnic area on Bowen Road to look for the ospreys.

Great blue herons are nesting in a rookery (nesting colony) in the trees on the south side of Ellis Pond. They are most easily seen from the Wright Road parking lot across from the park office. At least 20 nests are being actively used. Watch for herons flying from the rookery as they head to area wetlands and streams to hunt for fish and frogs. Herons should hatch in mid-May. As the trees leaf out the nests become harder to see. In late May and June look for "whitewash" (bird droppings) on leaves beneath the nests and listen for loud squawking from hungry young herons.

Metro Parks E-Newsletter

Columbus & Franklin County



feel free!

Earth Day tree planting to commemorate Grange Insurance Audubon Center construction start-up

The Grange Insurance Audubon Center will welcome the community and distinguished guests for a tree planting ceremony on Tuesday, April 22 at 2 p.m. to commemorate breaking ground for its new facility at the Scioto Audubon Metro Park on the Whittier Peninsula (420 W. Whittier Street). The ceremony marks another chapter in the development of the Center as one of the city's most significant environmental projects.

The Center will become a reality due to the unique partnership among the City of Columbus, Franklin County, Audubon Ohio, Metro Parks, Grange Insurance and many other businesses and individuals. Public and private donations have contributed about \$13 million on the way to the \$14.5 million campaign goal. The ceremony also marks the start of the public campaign for those wanting to support the Center. Donations can be made by purchasing a founding membership for \$100, a paver for the Center walkway for \$250 or a commemorative wall stone for \$2,500.

Metro Parks E-Newsletter

Columbus & Franklin County



*feel
free!*

Walk with a Doc

Mark your calendar for April 26, 2008, when Nationwide Better Health (NBH) sponsors "Walk with a Doc" at Highbanks Metro Park. We'll meet at the Big Meadows Picnic Area around 8:30 a.m. and begin the morning with few tips on reducing stress in your life before enjoying a light and healthy breakfast.

The walk will last 30-45 minutes, which gives you plenty of time to ask Dr. Dave any questions. And on your way out - be sure to stop back at the Big Meadows Picnic Area and pick up your NBH goody bag, filled with items to keep your fitness spark going after you leave the park.

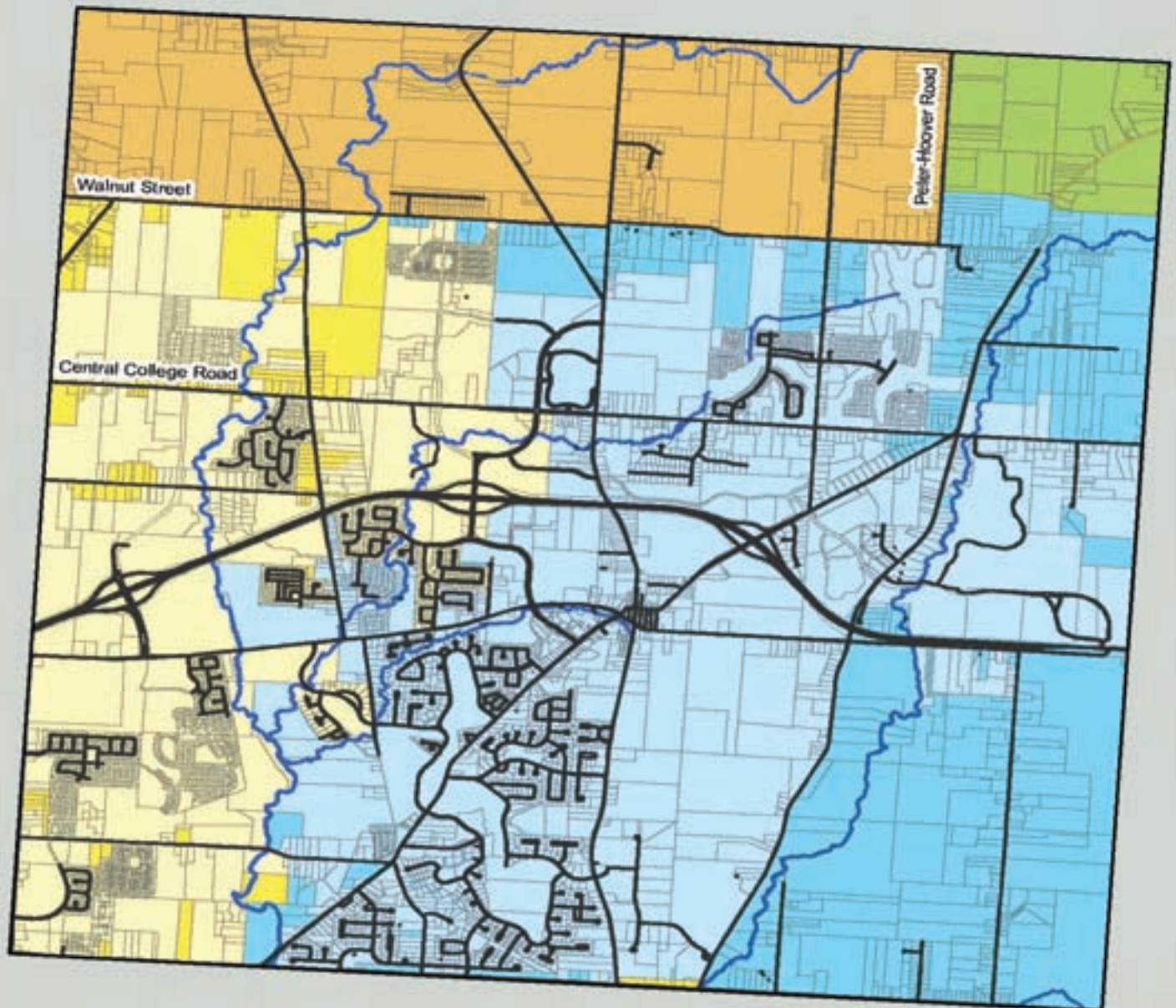
Visit www.walkwithadoc.org for more information about the hike and the Walk With a Doc program.

ROCKY FORK

Metro Park Development Agreement

Metro Parks and its Partners

City of Columbus • Village of New Albany • Plain Township



- | | | | |
|---|------------------------|---|------------------------|
|  | Park Zone |  | City Growth Zone: East |
|  | City of Columbus |  | Village of New Albany |
|  | City Growth Zone: West |  | Village Growth Zone |