

Metro Parks E-Newsletter

Columbus & Franklin County



feel free!

May 30, 2008



If you have a question about some aspect of nature or about a Metro Park, the naturalists at Blendon Woods Metro Park can help. Email your question to enaturalist@metroparks.net. Most questions will be answered by the end of the next business day.

Junior golfing memberships now available at Blacklick Woods Golf Courses

New for 2008 golf season! Junior golfing memberships (17 years old & younger) will be available for purchase. Membership is good for both weekday and weekend play on Blacklick Woods Green Course. Junior membership cost is \$225 per year and will be honored for one year in respect to purchase date.

For information please call the pro shop at Blacklick Woods Metro Golf Courses, 614.861.3193.

More on your Metro Parks

website: www.metroparks.net
Infoline: 614.508.8000
Telephone: 614.891.0700

From the Executive Director

Presentations to the Park Board

The Metro Parks Board of Park Commissioners met on May 13, 2008 with a full agenda. Mr. Greg Lashutka attended his first Park Board meeting following his recent appointment to the Board... ([more](#))



A garden of delights

This year's theme at Inniswood Metro Gardens, "Sunrise, Sunset" features an explosion of colorful annuals and perennials... ([more](#))



Where do we grow from here?

Protecting green space is key to curbing sprawl and your Metro Parks has been creating new parks and protecting open space and vital wildlife habitat for more than 60 years... ([more](#))

Birds of prey

Representatives from Ohio Nature Education will have some owls and hawks at the Birds of Prey program at Pickerington Ponds Metro Park beginning at 10 a.m. on June 14... ([more](#))

Fishing on Thoreau Lake

The beginning of summer offers several opportunities to explore the depths of Thoreau Lake at Blendon Woods Metro Park... ([more](#))

Photo Exhibit at the High Road Gallery

Places are still available in the Metro Parks Photo Exhibit for Central Ohio photographers. Display your work with other photographers in Worthington's premier art and photo gallery... ([more](#))

Summer Parkscape now available

[Click here](#) to download an electronic version of the summer Parkscape, or pick up a copy at your nearest Metro Park.

Metro Parks E-Newsletter

Columbus & Franklin County



feel free!

BACK

Presentations to the Park Board

The Metro Parks Board of Park Commissioners met on May 13, 2008 with a full agenda. Mr. Greg Lashutka attended his first Park Board meeting following his recent appointment to the Board. Christine Boyd, Elementary Science Coordinator for Columbus City Schools, made a presentation about our partnership with the schools. Metro Parks works closely with the schools to provide educational programs that assist the students in learning science concepts that are necessary for their proficiency requirements. In addition, Metro Parks provides training for teachers that improves the success of the program. Participating students have shown a 30 percent improvement in the subject matter as a result of this program. Ms. Boyd indicated that there are many more schools that would like to participate in the program.

At the Park Board meeting we also had a presentation from Mr. Joseph Ciminello, a developer who is proposing an agreement with Metro Parks and other governments that he claims would lead to Metro Parks being able to acquire land for the proposed new park in northeast Franklin County at a substantially reduced price. His proposal would require that the City of Columbus, the Village of New Albany and Plain Township all agree to substantially change agreements that were signed earlier this year following years of negotiation with numerous public discussions. He would like sewer and water lines extended to new areas that he could develop, and extended through the proposed park zone so that much higher federal tax donations could be potentially available to donors who might give land for the park. Questions of ethics have been raised about the idea of inflating land prices so that higher tax deductions can be achieved. I have doubts about the legality of the proposal. In addition, Township, City and Village officials expressed opposition to the proposal as not being consistent with their land use plans. Mr. Ciminello invited many landowners to the meeting, some of whom suggested that Mr. Ciminello has indicated to them that they could get more money for their land if they cooperate with him. This may make it more difficult for Metro Parks to acquire land in the area of the proposed park. Metro Parks hopes to acquire land for the park at a fair price beginning this year.

Several resolutions were approved at the meeting, including resolutions related to building more regional trails and resolutions necessary for continued progress at Scioto Audubon Metro Park on the Whittier Peninsula near downtown Columbus. Another resolution appointed the inaugural Board of the Stewards of Metro Parks, our new non-profit partner. Minutes of the Park Board meeting are available on Metro Parks website www.metroparks.net.

Metro Parks E-Newsletter

Columbus & Franklin County



feel free!

BACK

A garden of delights

Enjoy a dazzling setting filled with beauty, serenity, and fun as you stroll the pathways at Inniswood Metro Gardens in Westerville. Nestled within a scenic nature preserve, the 122-area botanical gardens are a continual source of inspiration for Central Ohioans of all ages.

This year's theme, "Sunrise, Sunset" features an explosion of colorful annuals and perennials. Container plants filled with dianthus, salvia and catmint are at their peak. Kentucky coffee tree, yellowwood, black locust and a few other fragrant late flowering trees and shrubs are still in bloom.

Summer programs for kids begin mid-June. Call 614.895.6216 or visit www.inniswood.org for more information.

Inniswood will also be one of the featured destinations on Westerville's annual WesterFlora Tour on July 20. Gardens selected for the tour exemplify the best in landscape diversity, and horticultural expression. Go to www.westerflora.org for more information.



Mexican sunflower at Inniswood: Robert Shunk

Metro Parks E-Newsletter

Columbus & Franklin County



*feel
free!*

BACK

Where do we grow from here?

Protecting green space is key to curbing sprawl and your Metro Parks has been creating new parks and protecting open space and vital wildlife habitat for more than 60 years. The Mid-Ohio Regional Planning Commission estimates that Central Ohio will grow to 2.5-million people by the year 2030.

In 2006, Metro Parks worked with an urban planning doctoral student at the Ohio State University to analyze urban growth around three Metro Parks between 1965 and 2005. [Click here to see the maps of Pickerington Ponds, Blacklick Woods and Sharon Woods.](#) These maps show just how vital the Metro Parks are in balancing urban sprawl and green space within Central Ohio to ensure that people have a place to relax and commune with nature.

Metro Parks E-Newsletter

Columbus & Franklin County



*feel
free!*

[BACK](#)

Birds of prey

Representatives from Ohio Nature Education will have some owls and hawks at the Birds of Prey program at Pickerington Ponds Metro Park beginning at 10 a.m. on June 14 at the Glacier Knoll Picnic Area. Find out how you can get involved in this volunteer organization that provides a home for animals that can no longer live in the wilds.

During the program you may get to see the baby ospreys that are starting to peek out of the nest. The Birds of Prey program features lots of activities for the entire family.

Metro Parks E-Newsletter

Columbus & Franklin County



feel free!

BACK

Fishing on Thoreau Lake

The beginning of summer offers several opportunities to explore the depths of Thoreau Lake at Blendon Woods Metro Park. We will be fishing on our Summer Fishing program on Saturday June 7, from 9 a.m. till noon and again with our Fishing with Father program on Saturday June 15 from 6-9:30 p.m. Bring your own gear or borrow ours for hours of catch and release fishing. Maybe you'll tie into one of our many scrappy bluegills or even our big bass. Park at the maintenance shop and enjoy the pleasant half-mile stroll to the lake.



Large-mouth bass caught in Thoreau Lake: Sarah Dalton

Metro Parks E-Newsletter

Columbus & Franklin County



*feel
free!*

BACK

Metro Parks Photo Exhibit at the High Road Gallery

Sept. 3 to Sept. 28, 2008
High Road Gallery
Worthington

Places are still available in the Exhibit for Central Ohio photographers. Display your work with other photographers in Worthington's premier art and photo gallery. [Click here for more information and an entry form.](#)

Metro Parks E-Newsletter

Columbus & Franklin County



feel free!

BACK

Blacklick Woods Metro Park

1965



1984

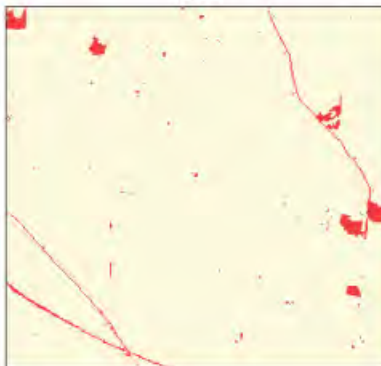


2005



Pickerington Ponds Metro Park

1965



1984



2005

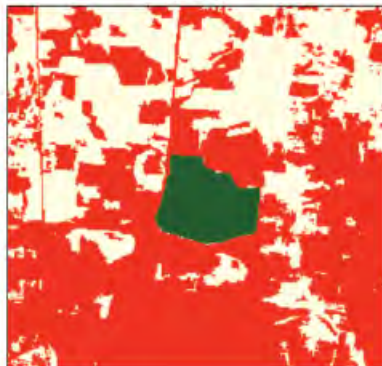


Sharon Woods Metro Park

1965






1984



2005



Key  nonurban  urban  Metro Park Image mapping by Gi-Choul Ahn, The Ohio State University