

Winter 2019-20

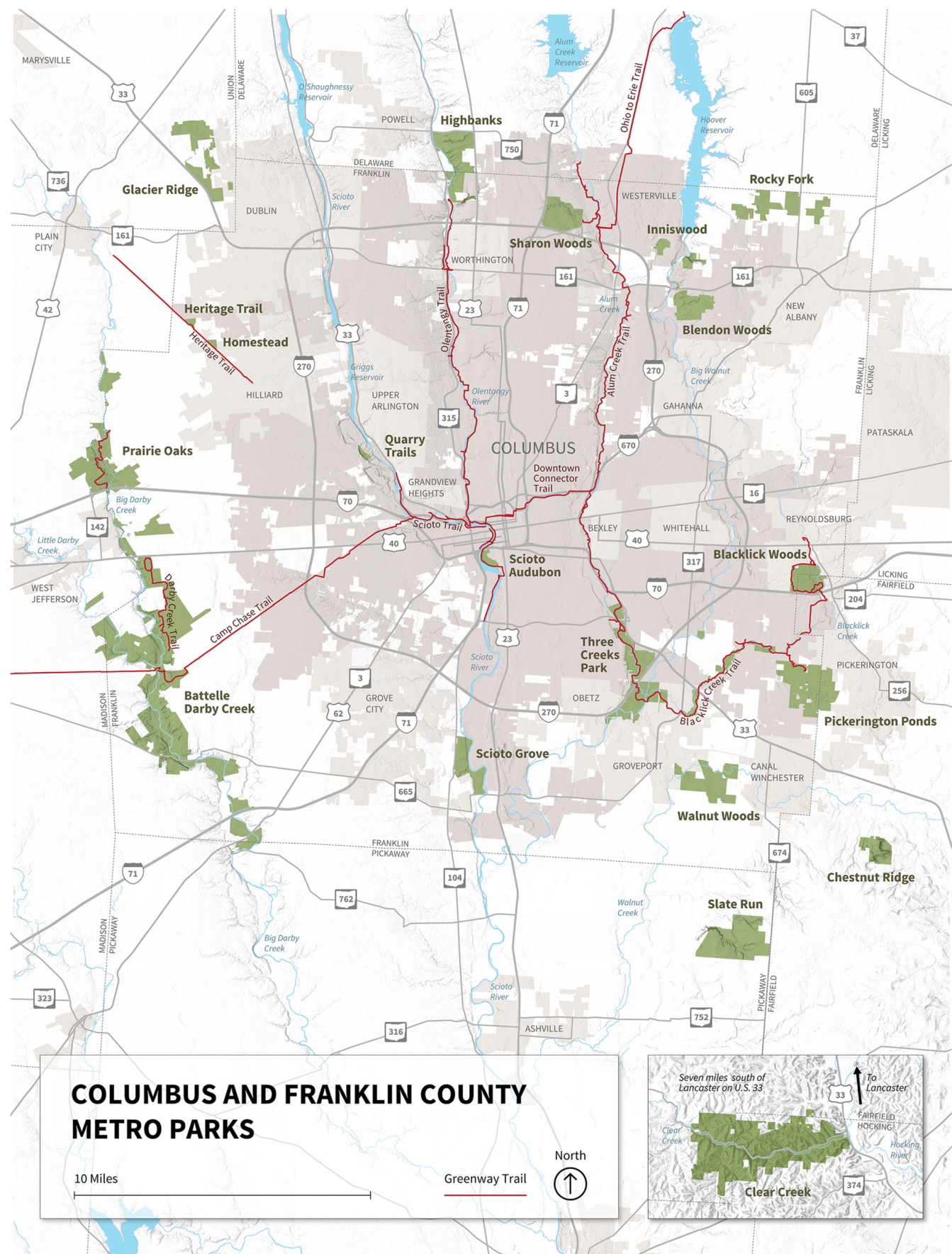
# ParkScope

# PROGRAM GUIDE





# Park Locations



# Contact Us

## METRO PARKS PHONE NUMBERS

Headquarters	614.891.0700
InfoLine	614.508.8000
Reservations	614.508.8111

## PARKS CELL PHONE NUMBERS

Battelle Darby Creek	614.370.6254
Blacklick Woods	614.208.4247
Blendon Woods	614.620.1861
Chestnut Ridge	614.208.4298
Clear Creek	740.969.8210
Glacier Ridge	614.216.8859
Heritage Trail	614.216.8859
Highbanks	614.906.3149
Homestead	614.216.8859
Inniswood	614.208.4301
Pickerington Ponds	614.208.4329
Prairie Oaks	614.208.4321
Rocky fork	614.595.9979
Scioto Audubon	614.202.5197
Scioto Grove	614.949.1078
Sharon Woods	614.315.5520
Slate Run	614.329.1392
Three Creeks	614.208.2874
Walnut Woods	614.357.9375

**WEBSITE:** [metroparks.net](http://metroparks.net)

**RESERVATIONS WEBSITE:** <https://web1.vermontsystems.com/wbwsc/ohfranklinctywt.wsc/splash.html>

**SOCIAL MEDIA:** [mediagroup@metroparks.net](mailto:mediagroup@metroparks.net)

**FACEBOOK:** [Columbus.Metro.Parks](#)

**INSTAGRAM:** [cbusmetroparks](#)

**TWITTER:** [CbusMetroParks](#)

**BLOG:** [tiny.cc/mp-blog](http://tiny.cc/mp-blog)



Metro Park	Acres	ARCHERY	BACKPACKING	BIKING	BOATING	CANOEING/KAYAKING	CROSS COUNTRY SKIING	DAY CAMPS	DISC GOLF	FISHING	FITNESS	GOLFING	HIKING/JOGGING	HORSEBACK RIDING	ICE SKATING	MOUNTAIN BIKING	NATURAL PLAY AREAS	NATURE CENTERS	NATURE PRESERVES	OBSTACLE COURSE	PET FACILITIES	PICNICKING	PLAY AREAS	ROCK CLIMBING	SLEDDING
Battelle Darby Creek	7,060			•		•	•			•			•		•		•	•			•	•	•		•
Blacklick Woods	643			•							•	•	•					•	•		•	•			•
Blendon Woods	653						•	•	•				•		•		•	•			•	•	•		
Chestnut Ridge	486									•			•			•					•	•	•		
Clear Creek	5,389									•			•					•			•	•			
Glacier Ridge	1,036			•		•		•					•	•		•			•		•	•	•		
Heritage Park & Trail	87			•									•	•							•				
Highbanks	1,159			•		•	•	•		•			•				•	•	•		•	•	•		•
Homestead	44									•			•								•	•	•		
Inniswood Metro Gardens	123			•									•								•				
Pickerington Ponds	1,600			•									•					•			•	•			
Prairie Oaks	2,136			•	•	•	•			•			•	•		•					•	•	•		
Rocky Fork	1,003			•									•	•							•	•			
Scioto Audubon	120			•	•	•				•			•			•		•	•		•	•	•	•	•
Scioto Grove	620	•	•	•		•		•	•				•								•	•	•		•
Sharon Woods	761			•						•	•		•			•		•			•	•			•
Slate Run Park & Farm	1,705						•		•				•	•		•					•	•	•		
Three Creeks	1,100			•		•				•			•			•					•	•	•		
Walnut Woods	1,098			•		•				•			•								•	•	•		•

Columbus & Franklin County Metro Parks (Metro Parks) is a public agency serving the citizens of Central Ohio by providing a regional system of clean, safe, natural area parks. Metro Parks features 19 outstanding natural area parks with more than 230 miles of trails and over 27,700 acres of land in seven Central Ohio counties. Parks are free and open 365 days a year.

# metro parks programs

December 2019, January, February 2020  
(advanced registration opens Nov 20, 2019)

**METRO FIVE-0** programs for ages 50 and older are color-coded by degree of difficulty:

**LEVEL 1** (easy, fully accessible) **LEVEL 2** (slow pace, less than 1-mile hike) **LEVEL 3** (up to 2-mile hike, moderate pace) **LEVEL 4** (hike over 2 miles at strenuous pace)

## BATTELLE DARBY CREEK

### DECEMBER

#### SELDOM SEEN GLACIERS

Take a 1-mile off-trail hike down into a gorge to seldom seen remnants of the Wisconsin Glacier. Level 5 - a very difficult hike getting into the gorge. Ages 13 and older *Nature Center*

DEC 1 SUN 1-3PM

#### EXPLORE DARBY WOODS

Explore Darby woods from the top of the trees to the bottom of the roots. 2-mile hike level 3. All Ages *Indian Ridge*

DEC 7 SAT 11AM-1PM

#### OWLS OF DARBY CREEK

Lure in owls using calls on a 1-mile hike. All Ages *Indian Ridge*

DEC 7 SAT 5PM

#### SUNSET BISON WALK

Enjoy the sunset as we locate the bison in their winter pasture. All Ages *Nature Center*

DEC 8 SUN 4PM

#### PRESCHOOLERS: SQUIRRELY SQUIRRELS

Sleepy Squirrel, Hungry Squirrel, Little Ball of Fur! Come learn all about what squirrels do in the winter. Ages 3-5 *Nature Center*

DEC 10 TUE 9:30 OR 11AM

#### ADULTS ONLY: LEVEL 1 ART SERIES - WATERCOLORS

Come learn this art technique and paint a nature picture with us. Registration required. Materials provided. Ages 18 and older *Advance registration*

DEC 11 WED 📞 110330400

#### FULL COLD MOON HIKE

Take a brisk 4-mile hike through fields and forests. All Ages *Ranger Station*

DEC 12 THU 5-8:30PM

#### PHOTO BASICS: WINTER PHOTOGRAPHY

Learn to photograph snowy landscapes, waterfalls, icicles and more all while protecting yourself and your equipment from the cold.

Ages 18 and older *Nature Center*

DEC 14 SAT 10AM

#### POP NATURE SERIES: THE SCIENCE OF STAR WARS

Celebrate the end of the saga! Learn how the galaxy far, far away relates to real-world astronomy, biology and technology. Crafts and activities will be available for younger fans. All Ages *Nature Center*

DEC 14 SAT 2PM

#### BON APPECREEK

Enjoy the fish feeding frenzy as you help feed them worms, crickets and other foods. All Ages *Nature Center*

DEC 15 SUN 1PM

#### PRESCHOOLERS: SQUIRRELY SQUIRRELS

Sleepy Squirrel, Hungry Squirrel, Little Ball of Fur! Come learn all about what squirrels do in the winter. Ages 3-5 *Nature Center*

DEC 20 FRI 11AM OR 1PM

#### HOLIDAY CRAFTS

Create easy seasonal crafts with materials found in nature. All Ages *Nature Center*

DEC 21-22 SAT-SUN 1-3PM

#### WINTER DOG WALK

Bring the pup out for a 3-mile evening stroll on the Darby Creek Greenway trail. All Ages *Ranger Station*

DEC 27 FRI 4-6PM

#### NIGHT AT THE NATURE CENTER

See what animals awaken after dark in the 53-foot living stream. All Ages *Nature Center*

DEC 27 FRI 6-8PM



# JANUARY

## OWL PROWL

Lure in owls using calls on a 1-mile hike.  
All Ages *Indian Ridge*

JAN 4 SAT 5PM

## WILDLIFE HIKE

Take a 2-mile hike and look for winter animal activity. All ages *Ranger Station*

JAN 5 SUN 1–2:30PM

## ADULTS ONLY: LEVEL 1 ART SERIES - CHARCOAL

Come learn this art technique and draw a nature picture with us. Materials provided.  
Ages 18 and older *Advance registration*

JAN 8 WED 📞 10330400

## FULL WOLF MOON HIKE

Take a brisk 4-mile hike through fields and forests. All Ages *Ranger Station*

JAN 10 FRI 5–8:30PM

## YOGA IN THE PARK

Learn yoga to help rejuvenate your mind and body. All Ages *Cedar Ridge Lodge*

JAN 11 SAT 11:30AM

## PHOTO GROUP: A PHOTOGRAPHIC JOURNEY INTO THE DARKNESS

An introduction to night photography and light painting. Ages 18 and older *Nature Center*

JAN 11 SAT 10AM

## ADULTS ONLY: HARRIERS & SHORT EARS

We'll visit the wetland looking for harriers and short Eared owls on a short prairie hike.  
Ages 18 and older *Nature Center*

JAN 11 SAT 5PM

## PRESCHOOLERS: DINO DIG

Dig up some dirt on how these prehistoric creatures lived! Ages 3-5 *Nature Center*

JAN 14 TUE 9:30 OR 11AM

## FAMILY OVERNIGHT AT THE NATURE CENTER

Come camp out with us in the nature center.  
Bring your own sleeping bag and gear to accommodate your whole family.  
Ages 5 and older *Advance registration*

JAN 18 SAT 📞 10352001

## BON APPECREEK

Enjoy the fish feeding frenzy as you help feed them worms, crickets and other foods. All Ages *Nature Center*

JAN 18 SAT 1PM

## TEETH, JAWS & CLAWS

"The Carnivorous Dinosaurs and Why Birds Are Dinosaurs." This talk looks at the tremendous diversity of theropods and carnivorous dinosaurs and why scientists say birds are living dinosaurs. All Ages *Nature Center*

JAN 19 SUN 2PM

## BISON: BEHIND THE SCENES

See how park staff tend to our bison.  
All Ages *Nature Center*

JAN 25 SAT 1–3PM

## WINTER TREE ID

No leaves? No problem! Learn to identify trees by the rest of their features. All Ages *Ranger Station*

JAN 26 SUN 2–3:30PM

## PRESCHOOLERS: DINO DIG

Dig up some dirt on how these prehistoric creatures lived! Ages 3-5 *Nature Center*

JAN 31 FRI 11AM OR 1PM

# FEBRUARY

## SUCCULENTS

Come learn about these amazing indoor plants and pot one to bring home with you!  
All Ages *Nature Center*

FEB 1 SAT 1–3PM

## OWLS – WHOO'S CALLING?

Lure in owls using calls on a 1-mile hike.  
All Ages *Indian Ridge*

FEB 1 SAT 5:30PM

## BISON

Enjoy a hike to see North America's largest land mammal. All ages *Nature Center*

FEB 2 SUN 2PM

## YOGA IN THE PARK

Learn yoga to help rejuvenate your mind and body. All Ages *Cedar Ridge Lodge*

FEB 8 SAT 11:30AM

## PHOTO GROUP: IMAGE REVIEW

Attendees are invited to share their photos and receive constructive feedback. All skill levels welcome. Ages 18 and older *Nature Center*

FEB 8 SAT 10AM

## CAMPFIRE

Enjoy a winter campfire with hot coco and make s'mores. All Ages *Ranger Station*

FEB 8 SAT 4–6PM

## NOON NATIVE TEAS

Look at native and wild plants that can be used to make tea and then make your own blend. All Ages *Nature Center*

FEB 8 SAT 12PM

## WILDLIFE HIKE

Take a 2-mile hike and look for winter animal activity. All ages *Indian Ridge*

FEB 9 SUN 1–2:30PM

## FULL SNOW MOON HIKE

Take a brisk 4-mile hike through fields and forests. All Ages *Ranger Station*

FEB 9 SUN 6–9:30PM

## PRESCHOOLERS: WOODPECKERS IN WINTER

WHAM WHAM BAM! Learn all about these weird wonderful birds. Ages 3-5 *Nature Center*

FEB 11 TUE 9:30 OR 11AM

## ADULTS ONLY: LEVEL 1 ART SERIES - PASTELS

Come learn this art technique and paint a nature picture with us. Materials provided. Ages 18 and older *Advance registration*

FEB 12 WED 📞 10330400

### I'M FROND OF YOU

Get outside with a loved one on Valentine's Day and hike 2-miles learning about ferns. Ages 18 and older *Indian Ridge*

FEB 14 FRI 5–6:30PM

### IRONWOOD WOLVES

Ironwood Wolves talk about the relationship between two mighty North American mammals – the wolf and the bison. There will also be an opportunity to meet one of their ambassadors. All Ages *Nature Center*

FEB 15 SAT 2PM

### SIGNS OF SPRING

Walk and watch for early signs of spring. All Ages *Ranger Station*

FEB 16 SUN 1PM

### NIGHT AT THE NATURE CENTER

See what animals awaken after dark in the 53-foot living stream. All Ages *Nature Center*

FEB 16 SUN 6–8PM

### STUMP THE NATURALIST

Learn about some weird things that have stumped our naturalist and check them out under a microscope. If you have something that you found but can't identify, bring it along! All Ages *Nature Center*

FEB 16 SUN 2–4PM

### 47TH ANNUAL WINTER HIKE SERIES

Enjoy a 2-, 4- or 6- mile trek along the banks and bluffs of Big Darby Creek. All ages *Ranger Station*

FEB 22 SAT 10AM–1PM

### THE GOOD, THE BAD AND THE HUNGRY: DEALING WITH WILDLIFE CONFLICT IN YOUR LANDSCAPE

Viewing wildlife species in your backyard can be enjoyable, but sometimes conflict arises, usually in the form of damage such as eaten plants, dug up bulbs or holes in the lawn. Fortunately, most wildlife damage can be managed with the right techniques and strategies. All Ages *Nature Center*

FEB 23 SUN 2–3PM

### PRESCHOOLERS: WOODPECKERS IN WINTER

WHAM WHAM BAM! Learn all about these weird wonderful birds. Ages 3-5 *Nature Center*

FEB 28 FRI 11AM OR 1PM

### BON APPECREEK

Enjoy the fish feeding frenzy as you help feed them worms, crickets and other foods. All Ages *Nature Center*

FEB 29 SAT 1PM

### TRIVIA NIGHT

It's Leap Day! Come test your knowledge on a variety of rare and unusual nature and cultural trivia on this day that only comes every four years. Check out the Facebook event page for more details. All Ages *Nature Center*

FEB 29 SAT 6–8PM

BLACKLICK WOODS

## DECEMBER

### STORY TIME

Enjoy a reading of “The Mitten” and help the naturalist fill a giant mitten with animals as we learn about how animals adapt to winter. Ages 1-5  
*Nature Center*

DEC 2 MON 10AM

### METRO FIVE-0: LEVEL 3 WALK OF THE MONTH

Take a 2-mile walk to discover the sights and sounds of the season. Ages 50 and older  
*Ash Grove Picnic Area*

DEC 4 WED 11AM–12:30PM

### MORNING COFFEE & WILDLIFE WATCH

View animals through the nature center windows and enjoy a cup of coffee. All ages  
*Nature Center*

DEC 7 SAT 8–10AM

### PRESCHOOLERS: BEAR SNORES ON

Learn about animals that are seasonally sleepy through books, activities and a craft. Ages 3-5  
*Beech Maple Lodge*

DEC 11 WED 10AM OR 1PM

### ICE AGE OHIO DISPLAY

Learn about life in Ohio during the Ice Age. All ages  
*Nature Center*

DEC 14-15 SAT-SUN 8AM–6PM

### HOMESCHOOLERS: WINTER SURVIVAL

Learn how animals hibernate, migrate or adapt to make it through the winter. Ages 6-12  
*Beech Maple Lodge*

DEC 16 MON 10AM OR 1PM

### METRO FIVE-0: LEVEL 3 SOLSTICE WALK

Start winter off right with a 2-mile walk. Ages 50 and older  
*Nature Center*

DEC 21 SAT 4PM

### LEGEND OF THE CHRISTMAS SPIDER

Listen to a European folktale about a spider and make a spider ornament for your Christmas tree. All ages  
*Beech Maple Lodge*

DEC 23 MON 1PM

### TOTS ON TRAILS

Join a naturalist for a slow-paced half-mile walk through the woods. Ages 5 and younger  
*Nature Center*

DEC 27 FRI 10AM

## JANUARY

### BLACKLICK WOODS IN WINTER DISPLAY

Discover what plants, animals and fungi can be found in the coldest months of the year. All ages  
*Nature Center*

JAN 4-5 SAT-SUN 8AM–6PM

### 47TH ANNUAL WINTER HIKE SERIES

Take a 2- or 4-mile walk through the woods and meadows. Hot drinks and snacks provided. All ages  
*Ash Grove Picnic Area*

JAN 4 SAT 10AM–12PM

### PRESCHOOLERS: OWLS

Discover the secret lives of owls through stories, activities and a craft. Ages 3-5  
*Beech Maple Lodge*

JAN 8 WED 10AM OR 1PM

### METRO FIVE-0: LEVEL 3 LANTERN HIKE

Take a 1.5-mile lantern-lit hike. Ages 50 and older  
*Nature Center*

JAN 10 FRI 6:30PM

### SCOUT DAY: BEARS FUR, FEATHERS & FERNS

Boy Scouts will participate in activities toward earning the Fur, Feathers and Ferns Achievement. Ages 8-10  
*Nature Center*

JAN 11 SAT 2PM

### PROJECT FEEDERWATCH

Help us count birds visiting the feeders to collect population data for scientists. All ages  
*Nature Center*

JAN 12 SUN 2–4PM

### HOMESCHOOLERS: SUBNIVEAN ZONE

Learn about animals that live under the snow through activities and a craft. Ages 6-12  
*Beech Maple Lodge*

JAN 13 MON 10AM OR 1PM

### FAMILY FRIENDLY LANTERN HIKE

Take a 1.5-mile lantern-lit hike. All ages  
*Nature Center*

JAN 17 FRI 6:30PM

### FORTS, FIRE & FUN

Build a fort, try your hand at fire building and have fun exploring our natural play area. Ages 4-15  
*Nature Center*

JAN 18 SAT 4PM

### INSECTS IN WINTER

Learn how insects survive in winter, then dig through leaf litter, turn over logs and shake tree branches to find some. All ages  
*Nature Center*

JAN 25 SAT 2PM



### TOTS ON TRAILS

Join a naturalist for a slow-paced half-mile walk through the woods. Ages 5 and younger  
*Nature Center*

JAN 31 FRI 10AM

## FEBRUARY

### MORNING COFFEE & WILDLIFE WATCH

View animals through the nature center windows and enjoy a cup of coffee. All ages  
*Nature Center*

FEB 1 SAT 8–10AM

### SNOWY STORY TIME

Enjoy winter-themed books that celebrate the best of the season and make a craft. All ages  
*Nature Center*

FEB 3 MON 10–11AM

### ANIMAL COURTSHIP DISPLAY

Discover some of the fascinating ways wild animals attract a mate. All ages *Nature Center*

FEB 8-9 SAT-SUN 8AM–6PM

### METRO FIVE-0: LEVEL 4 HIKE ALL TRAILS

Join a naturalist on a brisk 6-mile walk through the park. Ages 50 and older *Nature Center*

FEB 8 SAT 10AM

### PRESCHOOLERS: I LOVE NATURE

Join us as we share our favorite things about nature through books, activities and a craft. Bring a nature themed item for show and tell! Ages 3-5 *Beech Maple Lodge*

FEB 12 WED 10AM OR 1PM

### LICHEN YOU VERY MOSS

Take a 1.5-mile hike to look for winter mosses and lichens. All ages *Nature Center*

FEB 15 SAT 2PM

### HOMESCHOOLERS: TRACKS AND TRAILS

Learn how to identify signs of wildlife and make a track to take home. Ages 6-12  
*Beech Maple Lodge*

FEB 17 MON 10AM OR 1PM

### WOOF WALK

Come take a 2-mile walk with your furry friend on National Walking the Dog Day! All ages  
*Nature Center*

FEB 22 SAT 10AM

### MEET THE CRITTERS DISPLAY

Many animals call Blacklick Woods Nature Center home. Meet Rocket the ratsnake, Splinter the box turtle and more. Learn how they came here and how their species behave in the wild. All ages *Nature Center*

FEB 22-23 SAT-SUN 8AM–6PM

### YOU CAN EAT THAT

Take a 1-mile walk to find wild edibles and try some samples. All ages *Nature Center*

FEB 23 SUN 2PM

### TOTS ON TRAILS

Join a naturalist for a slow-paced half-mile walk through the woods. Ages 5 and younger  
*Nature Center*

FEB 28 FRI 10AM

## BLENDON WOODS

# DECEMBER

### MAMMAL DISPLAY

Learn about the mammals of Ohio! All ages

*Nature Center*

DEC 1-7 MON-SUN 9AM-5PM

### TODDLERS IN NATURE: GOODBYE AUTUMN, HELLO WINTER!

Celebrate the transition from autumn to winter with a story about a brother and sister taking a walk through town and the forest watching the changes in season. Ages 1-3

*Nature Center*

DEC 5 THU 9:30 OR 11AM

### FIRST FRIDAY STORYTIME

Join us for some stories about wildlife and nature! Ages 3-7

*Nature Center*

DEC 6 FRI 10AM

### PHOTO PROWL

Walk to Thoreau Lake and photograph the wintering waterfowl. All ages

*Nature Center*

DEC 7 SAT 9AM

### PROJECT FEEDERWATCH

Drop by to help collect data for this important citizen science project that tracks trends in winter bird distribution and abundance. No experience necessary! All ages

*Nature Center*

DEC 7-8 SAT-SUN 10AM-2PM

### BIRD HIKE

Search for migrating waterfowl and other early winter birds on a 1-mile hike to the blinds.

All ages *Nature Center*

DEC 8 SUN 9AM

### TODDLERS IN NATURE: TIME TO SLEEP

Bear and his forest friends are getting ready for winter in different ways. Some animals sleep/hibernate/migrate, or just survive the winter. Ages 1-3

*Nature Center*

DEC 12 THU 9:30 OR 11AM

### HIKE AROUND THE LAKE

Delve deep into the Walden Waterfowl refuge on this special off-trail hike around the back of Thoreau Lake. All ages

*Nature Center*

DEC 14 SAT 2PM

### 120TH ANNUAL CHRISTMAS BIRD COUNT

Participate in one of the nation's oldest citizen science projects as we count birds for the Audubon Christmas Bird Count. No experience necessary! All ages

*Nature Center*

DEC 15 SUN 9AM

### PRESCHOOLERS: WINTER IN THE WOODS

Animals survive the winter in different ways - hibernate, migrate, or tough it out! Ages 3-6

*Nature Center*

DEC 17 TUE 9:30 OR 11AM

DEC 20 FRI 9:30 OR 11AM

### COFFEE, COCOA & BIRDS

Drop by and enjoy a steaming cup while watching birds at our viewing window. All ages

*Nature Center*

DEC 21-22 SAT-SUN 10AM-2PM

### WINTER WONDERLAND SCAVENGER HUNT

See if you can find all of the winter creatures hiding in the nature center! All ages

*Nature Center*

DEC 21-27 MON-SUN 9AM-5PM

### NEW MOON LANTERN STROLL

Relax after the holidays with a peaceful lantern-lit hike through the forest. All ages

*Nature Center*

DEC 26 THU 5PM

### COFFEE, COCOA & BIRDS

Drop by and enjoy a steaming cup while watching birds at our viewing window. All ages

*Nature Center*

DEC 28-29 SAT-SUN 10AM-2PM

# JANUARY

### NEW YEAR'S DAY BIRD HIKE

Hike 1.5 miles to look for winter birds. All ages

*Nature Center*

JAN 1 WED 9AM

### TODDLERS IN NATURE: NO TWO ALIKE

Join a pair of cardinals as they fly through the winter woods wondering if things are the same or different or similar. We will make bird feeders to help our winter bird friends keep warm. Ages 1-3

*Nature Center*

JAN 2 THU 9:30 OR 11AM

### FIRST FRIDAY STORYTIME

Join us for some stories about wildlife and nature! Ages 3-7

*Nature Center*

JAN 3 FRI 10AM

### WOODPECKERS AT BLENDON RAVINES

Search for six species of woodpeckers on a 1.5-mile off-trail hike through the Blendon Ravines. Meet at 5280 Cambria Way. Park along the street. All ages

*Blendon Ravines*

JAN 4 SAT 10AM

### TODDLERS IN NATURE: OVER AND UNDER THE SNOW

There is a secret kingdom that lives under the snow, what could be living there? Join us for a day of mystery and winter adventure! Ages 1-3

*Nature Center*

JAN 9 THU 9:30 OR 11AM

### PROJECT FEEDERWATCH

Help collect data for this important citizen science project that tracks trends in winter bird distribution and abundance. No experience necessary! All ages

*Nature Center*

JAN 11 SAT 10AM-2PM

### COFFEE, COCOA & BIRDS

Drop by and enjoy a steaming cup while watching birds at our viewing window.

All ages *Nature Center*

JAN 11-12 SAT-SUN 10AM-2PM

### BIRD FEEDING BASICS

Learn about preferred foods and feeder styles of Ohio birds, watch for some common winter visitors and make a simple feeder to take home. All ages

*Nature Center*

JAN 11 SAT 1-2PM

### PROJECT FEEDERWATCH

Help collect data for this important citizen science project that tracks trends in winter bird distribution and abundance. No experience necessary! All ages [Nature Center](#)

JAN 12 SUN 10AM–2PM

### KIDS'N CANVAS

Follow along as we paint a winter nature scene! Ages 7-12 [Advance registration](#)

JAN 12 SUN 📞 10220400

### COFFEE, COCOA & BIRDS

Drop by and enjoy a steaming cup while watching birds at our viewing window. All ages [Nature Center](#)

JAN 18-19 SAT-SUN 10AM–2PM

### TRACKS AND SIGNS

Hike 2 miles to search for some common animal tracks and signs. All ages [Nature Center](#)

JAN 19 SUN 2–3PM

### PRESCHOOLERS: CAMOUFLAGE

Learn about how animals play hide and seek! Ages 3-5 [Nature Center](#)

JAN 21 TUE 9:30 OR 11AM

JAN 24 FRI 9:30 OR 11AM

### COFFEE, COCOA & BIRDS

Drop by and enjoy a steaming cup while watching birds at our viewing window. All ages [Nature Center](#)

JAN 25-26 SAT-SUN 10AM–2PM

### WEBELOS: INTO THE WILD

Work on requirements toward earning this achievement. Ages 10-12 [Advanced registration](#)

JAN 25 SAT 📞 10222002

### HOMESCHOOLERS: CAMOUFLAGE

Learn how camouflage is essential to some animals' survival. Ages 6-12 [Nature Center](#)

JAN 28 TUE 10AM

JAN 29 WED 1PM

## FEBRUARY

### 47TH ANNUAL WINTER HIKE SERIES

Join us for a 2-, 4- or 6-mile hike. Refreshments served beginning at 10am. All ages [Blendon Woods Natural Play Area Shelter](#)

FEB 1 SAT 10AM–12PM

### SUPER FOWL SUNDAY

Enjoy a walk out to Thoreau Lake to watch waterfowl before watching the big game! All ages [Nature Center](#)

FEB 2 SUN 1PM

### WINTER PUPPET SHOW

Join the Blendon Woods puppets for a winter adventure! All ages [Nature Center](#)

FEB 3-4 MON-TUE 9:30, 10:30 OR 11:30AM

### TODDLERS IN NATURE: WINTER YOGA WALK

Let's learn through movement as we walk through the winter forest. Take a deep breath of the winter air as we pose like animals in the woods. Ages 1-3 [Nature Center](#)

FEB 6 THU 9:30 OR 11AM

### FIRST FRIDAY STORYTIME

Join us for some stories about wildlife and nature! Ages 3-7 [Nature Center](#)

FEB 7 FRI 10AM

### CADETTES: NIGHT OWL OVERNIGHT

Girls will sleep overnight in the Nature Center. We will work on requirements toward earning the Night Owl Badge. Ages 11-14 [Advanced registration](#)

FEB 7-8 FRI-SAT 📞 10222001

### COFFEE, COCOA & BIRDS

Drop by and enjoy a steaming cup while watching birds at our viewing window. All ages [Nature Center](#)

FEB 8-9 SAT-SUN 10AM–2PM

### BIRD HIKE

View and learn about the wintering waterfowl at Thoreau Lake. All ages [Nature Center](#)

FEB 9 SUN 9AM

### KIDS'N CANVAS

Follow along as we paint a winter nature scene! Ages 7-12 [Advance registration](#)

FEB 9 SUN 📞 10220400

### INTERNATIONAL DAY OF WOMEN AND GIRLS IN SCIENCE DISPLAY

Drop by to see a display featuring inspirational stories and photos of successful women in science careers, both local and worldwide! All ages [Nature Center](#)

FEB 11-17 MON-SUN 9AM–5PM

### TODDLERS IN NATURE: BEST IN SNOW

How do things look different in each season? The sky? The clouds? The grass? The pond? The fields? The trees? Open your eyes to the beauty of winter. Ages 1-3 [Nature Center](#)

FEB 13 THU 9:30 OR 11AM

### VALENTINE'S DAY IS FOR THE BIRDS... AND THE BEES!

Bring your special someone to enjoy a Valentine's treat and learn about some of the fascinating courtship and mating rituals in the animal kingdom. Ages 18 and older [Nature Center](#)

FEB 14 FRI 6:30PM

### PROJECT FEEDERWATCH

Help collect data for this important citizen science project that tracks trends in winter bird distribution and abundance. No experience necessary! All ages [Nature Center](#)

FEB 15-16 SAT-SUN 10AM–2PM

### INTERNATIONAL DAY OF WOMEN AND GIRLS IN SCIENCE: PANEL DISCUSSION

Hear from some outstanding local women with successful careers from a wide variety of scientific fields. Our knowledgeable guests will be: Ally Baker (GIS [Geographic Information System Mapping] Specialist at Metro Parks), Dr. Beaux Berkeley (Assistant Professor at Otterbein University who also conducts research on elephants in South Africa), Jen Dennison (Wildlife Education Coordinator for the Ohio Department of Natural Resources - Division of Wildlife), Bev Koenig (Retired Westerville Schools Life Sciences teacher and monarch butterfly specialist), Carrie Morrow (Assistant Resource Manager at Metro Parks), and a representative from the Ohio Wildlife Center's Animal Hospital! All ages [Nature Center](#)

FEB 15 SAT 10AM–12PM



### COFFEE, COCOA & BIRDS

Drop by and enjoy a steaming cup while watching birds at our viewing window. All ages *Nature Center*

FEB 15-16 SAT-SUN 10AM-2PM

### WINTER TREE ID AT BLENDON RAVINES

Explore this mature forest and learn how to ID trees by the bark and learn about their uses. Meet at 5280 Cambria Way. Park along the street. All ages *Blendon Ravines*

FEB 16 SUN 2PM

### PRESCHOOLERS: TRACKS IN THE SNOW (OR MUD!)

We'll hear a story, make some tracks and go searching for real ones, weather permitting. Ages 3-5 *Nature Center*

FEB 18 TUE 9:30 OR 11AM

FEB 21 FRI 9:30 OR 11AM

### COFFEE, COCOA & BIRDS

Drop by and enjoy a steaming cup while watching birds at our viewing window. All ages *Nature Center*

FEB 22-23 SAT-SUN 10AM-2PM

### SKUNK CABBAGE STROLL

Stroll off-trail behind the lake to search for this earliest of spring wildflowers. Expect to get muddy! All ages *Nature Center*

FEB 23 SUN 2-3:30PM

### HOMESCHOOLERS: TRACKS AND SIGNS OF ANIMALS

Wildlife are all around us, even when we cannot see them. Learn ways to tell who's who just from evidence left behind. Ages 6-12 *Nature Center*

FEB 25 TUE 10AM

FEB 26 WED 1PM

### MAPLE SUGAR TIME

Drop by Blendon Woods' Sugarbush Day Camp area for a demonstration of maple syrup making. All ages *Sugarbush Day Camp*

FEB 29 SAT 10AM-2PM

CLEAR CREEK

## DECEMBER

### METRO FIVE-0: LEVEL 4 FERN GULLY HIKE

Navigate steep terrain and hike through a ravine on a 4-mile off-trail hike to the newest addition of property at Clear Creek. Terrain in the backcountry is unimproved, uneven and steep in areas. Water and hiking boots are recommended. Ages 50 and older *Creekside Meadows*

DEC 13 FRI 10AM–12:30PM

### FERN GULLY HIKE

Navigate steep terrain and hike through a ravine on a 4-mile off-trail hike to the newest addition of property at Clear Creek. Terrain in the backcountry is unimproved, uneven and steep in areas. Water and hiking boots are recommended. All ages *Creekside Meadows*

DEC 14 SAT 10AM–12:30PM

### WINTER SOLSTICE HIKE

Celebrate the shortest day of the year and catch the sunset on a 2-mile family-friendly hike to Lake Emily. Warm up with hot chocolate afterward. Wear appropriate hiking footwear. All ages *Park Office*

DEC 21 SAT 4:30–6PM

## JANUARY

### NEW YEAR'S DAY HIKE

Kick the New Year off with a 4-mile hike along the park trails. Terrain is uneven and steep in areas. Water and hiking boots are recommended. All ages *Creekside Meadows*

JAN 1 WED 10AM–12PM

### WINTER DOG HIKE

We're including the dogs in all of the winter hiking fun! Hit the trails with your favorite furry friend on a 1- or 2-mile self-guided hike. Warm up around a campfire and enjoy locally made treats afterwards. All dogs must be leashed. All ages *Barnebey-Hambelton Picnic Area*

JAN 5 SUN 1–3PM

### METRO FIVE-0: LEVEL 4 HIKE THE TRAILS

Explore one of the park's most rugged trails on a 3-mile hike. Ages 50 and older *Fern Parking Lot*

JAN 8 WED 10AM–12PM

### 47TH ANNUAL WINTER HIKE SERIES

Enjoy a 1- or 3-mile self-guided hike or choose from one of two guided 5-mile hikes. All ages *Thomas Mathias Parking Lot*

JAN 25 SAT 10AM–1PM

## FEBRUARY

### FLY TYING FOR BEGINNERS

Get a head start on fishing and learn to tie your own flies. All ages *Maintenance Shop*

FEB 8 SAT 12–1:30PM

### METRO FIVE-0: LEVEL 4 BACKCOUNTRY HIKE

Take in winter views and learn about the history of Neotoma Valley on a 4-mile off-trail hike. Terrain in the backcountry is unimproved, uneven and steep in areas. Water and hiking boots are recommended. Ages 50 and older *Thomas Mathias Parking Lot*

FEB 26 WED 10AM–12PM

### BACKCOUNTRY HIKE

Take in winter views and learn about the history of Neotoma Valley on a 4-mile off-trail hike. Terrain in the backcountry is unimproved, uneven and steep in areas. Water and hiking boots are recommended. All ages *Thomas Mathias Parking Lot*

FEB 29 SAT 10AM–12PM

GLACIER RIDGE

## DECEMBER

### WALK AND WOOF

Enjoy a 2.5-mile hike with your dog. All ages *Glacier Ridge Dog Park*

DEC 15 SUN 3PM

### CHRISTMAS BIRD COUNT

Search for birds and help collect data for the National Audubon Society Christmas Bird Count. Hot drinks provided. Ages 8 and older

*Maintenance Shop*

DEC 31 TUE 8-11AM

## JANUARY

### FOR FAMILIES: BARRED OWL HIKE

Try to lure in these raptors on a 1.5-mile hike.

Ages 5 and older *Shelter House*

JAN 3 FRI 5:30-7PM

### WALK AND WOOF

Enjoy a 2.5-mile hike with your dog. All ages *Glacier Ridge Dog Park*

JAN 12 SUN 3PM

### ADULTS: OFF-TRAIL RAPTOR HIKE

Trek approximately 3 miles through parts of the park not usually seen and look for birds of prey. Ages 18 and older *Shelter House*

JAN 19 SUN 2-4PM

### WINTER STARGAZING

Look at stars and constellations using telescopes and binoculars.

All ages *Glacier Ridge Energy Center (at the windmill)*

JAN 24 FRI 6PM

## FEBRUARY

### ADULTS: BARRED OWL HIKE

Try to lure in these raptors on a 1.5-mile hike. Ages 18 and older

*Shelter House*

FEB 1 SAT 5:30-7PM

### 47TH ANNUAL WINTER HIKE SERIES

Enjoy a brisk 2-mile hike through the grassland and forest. All ages

*Shelter House*

FEB 9 SUN 2-4PM

### YOUNG EXPLORERS: ANIMAL SIGNS

Take a 1-mile hike to look for footprints, scat and other signs of wildlife.

Ages 5-12 *Shelter House*

FEB 17 MON 10AM OR 1PM

### WALK AND WOOF

Enjoy a 2.5-mile hike with your dog. All ages *Glacier Ridge Dog Park*

FEB 29 SAT 3-4PM



## HIGHBANKS

# DECEMBER

### FOR ADULTS: FIRST SUNDAY WINTER BIRDING SERIES

On the first Sunday of the month, take a 2.5-mile hike to look for winter birds. All skill levels welcome. Binoculars available. Ages 18 and older

*Nature Center*

DEC 1 SUN 9AM–10:30PM

### PRESCHOOL: HOLIDAY CRAFTS

Celebrate the holidays through story, activities and crafts. Ages 3-5

*Nature Center*

DEC 11 WED 11AM OR 1PM

DEC 12 THU 9:30 OR 11AM

### CHRISTMAS BIRD COUNT

Help us count birds for the park for the annual Audubon Christmas Bird Count. Afterward, warm up with hot chocolate in the nature center while we tally our results. Ages 10 and older

*Nature Center*

DEC 14 SAT 8AM–12PM

### HOWL AT THE MOON DOG HIKE

Bring your canine friend on a 3.5-mile hike. Dogs must be leashed.

All ages *Nature Center*

DEC 14 SAT 5–7PM

### STORYTIME: DEER

Listen to some stories about deer and find out what they do when it gets cold outside. Ages 2-5

*Nature Center*

DEC 17 TUE 10AM

### FOR FAMILIES: BIRDS OF PREY

Meet owls and hawks from Ohio Wildlife Center. Learn about their amazing adaptations for survival. Ages 6 and older

*Nature Center*

DEC 19 THU 11AM

### FOR FAMILIES: BACKYARD BIRDS OPEN HOUSE

Come enjoy the birds at the Highbanks feeders and learn how to tell them apart. We might see pileated woodpeckers, blue jays, sparrows, hawks and more. Ages 6 and older

*Nature Center*

DEC 28 SAT 11AM–1PM

# JANUARY

### FOR ADULTS: DATE NIGHT LANTERN HIKE

Bring your significant other and learn about some of the ways animals share romance as you take a lantern-lit walk through the forest.

Ages 18 and older *Nature Center*

JAN 4 SAT 6–7:30PM

### PREPARING FOR WINTER HIKING

Join Outdoor Source for a class on how to prepare for hiking and camping in cold weather. Learn about layering, footwear, insulated jackets, sleeping bags and more! Ages 10 and older

*Nature Center*

JAN 5 SUN 1–2:30PM

### FOR ADULTS: FIRST SUNDAY WINTER BIRDING SERIES

On the first Sunday of the month, take a 2.5-mile hike to look for winter birds. All skill levels welcome. Binoculars available.

Ages 18 and older *Nature Center*

JAN 5 SUN 9–10:30AM

### FOR LITTLE KIDS: SINGALONG

Come sing songs with Joanie Calem. An hour of fun-filled folk songs, from all over the world. Something for everyone in this multi-generational experience! Ages 2-5

*Nature Center*

JAN 9 THU 11AM

### FOR FAMILIES: OWL HIKE

Take a 1-mile hike to look and listen for some of the owls that live in the park. Ages 6 and older

*Nature Center*

JAN 10 FRI 6PM

### HOWL AT THE MOON DOG HIKE

Bring your canine friend on a 3.5-mile hike. Dogs must be leashed.

All ages *Nature Center*

JAN 11 SAT 5–7PM

### WALK AND RUN 101

The hardest step is the first one that you take: but that one step can change your life. This beginners' clinic led by Lisa Dillahunt and Christina Solmos from the Columbus Running Company will focus on guiding you as you begin a new walking or running routine. No prior experience needed. The program will include a short talk indoors followed by a walk or run. We'll provide hot coffee and tea too. Ages 18 and older

*Nature Center*

JAN 11 SAT 11AM–12:30PM

### STORYTIME: SMELLY SKUNKS

Listen to stories about skunks and other wildlife friends. Ages 2-5

*Nature Center*

JAN 14 TUE 10AM

### FOR FAMILIES:

#### BACKYARD BIRDS OPEN HOUSE

Come enjoy the birds at the Highbanks bird feeders and learn how to tell them apart. We might see pileated woodpeckers, blue jays, sparrows, hawks and more. Ages 6 and older

*Nature Center*

JAN 19 SUN 11AM–1PM

### YOGA IN THE PARK

Learn beginning yoga after work to help rejuvenate mind and body. Bring your own mat and water bottle. Ages 18 and older

*Nature Center*

JAN 21 TUE 6PM

### FOR KIDS: WILDLIFE SIGNS & HOT COCOA

Take a 1-mile hike looking for tracks and other evidence of animals. Warm up with hot cocoa afterward in the nature center. Ages 6 and older

*Nature Center*

JAN 25 SAT 2–3:30PM

### PRESCHOOL: WILDLIFE TRACKS

Discover how to find animals in the winter through story, activities and craft. We will go outside looking for animal signs. Ages 3-5

*Nature Center*

JAN 29 WED 11AM OR 1PM

JAN 30 THU 9:30 OR 11AM

## FEBRUARY

### HOWL AT THE MOON DOG HIKE

Bring your canine friend on a 3.5-mile hike. Dogs must be leashed. All ages

*Nature Center*

FEB 1 SAT 5–7PM

### FOR ADULTS: FIRST SUNDAY WINTER BIRDING SERIES

On the first Sunday of the month, take a 2.5-mile hike to look for winter birds. All skill levels welcome. Binoculars available. Ages 18 and older

*Nature Center*

FEB 2 SUN 9–10:30AM

### 47TH ANNUAL WINTER HIKE SERIES

Join us for our winter hike with options for 2.5 or 5 miles. Refreshments afterward. All ages

*Northern Shelter*

FEB 8 SAT 10AM–12PM

### YOGA IN THE PARK

Learn beginning yoga after work to help rejuvenate mind and body. Bring your own mat and water bottle. Ages 18 and older

*Multi Purpose Room*

FEB 11 TUE 6PM

### STORYTIME: BIRDS OF PREY

Listen to stories about owls, hawks and other birds of prey. Find out why winter is the best time to find many of these birds. Ages 2-5

*Nature Center*

FEB 14 FRI 10AM

### FOR FAMILIES: BIRDS OF PREY

Meet owls and hawks from Ohio Wildlife Center. Learn about their amazing adaptations for survival. Ages 6 and older

*Nature Center*

FEB 16 SUN 2PM

### PRESCHOOL: EAGLES

Discover the bald eagle through activities, crafts and stories. Ages 3-5

*Nature Center*

FEB 18 TUE 11AM OR 1PM

FEB 19 WED 9:30 OR 11AM

### FOR FAMILIES:

#### CAMPFIRE BUILDING AND COOKING

Learn some techniques to build a campfire, then prepare and enjoy some simple campfire snacks. Ages 6 and older

*Nature Center*

FEB 23 SUN 2PM

### YOGA IN THE PARK

Learn beginning yoga after work to help rejuvenate mind and body. Bring your own mat and water bottle. Ages 18 and older

*Nature Center*

FEB 25 TUE 6PM

### LEAP DAY DATE NIGHT: GOURMET S'MORES AND NIGHT HIKE

Bring your significant other and enjoy trying your hand at some gourmet s'mores at the campfire. Optional guided night hike will be offered at 7pm. Please bring a flashlight. Ages 18 and older

*Northern Shelter*

FEB 29 SAT 6:30–8PM

## HOMESTEAD

# DECEMBER

### **BABIES: IT'S COLD OUTSIDE**

Enjoy some indoor winter sensory activities and nature-themed play! Ages 4 and younger

*Nature Center*

DEC 10 TUE 10AM–12PM

### **FOR FAMILIES: BACKYARD BIRDS**

Learn how to attract birds to your yard and make a bird feeder to take home. All ages

*Lakeside Pavilion*

DEC 27 FRI 2PM

# JANUARY

### **PRESCHOOL: OWLS**

Learn about owls through a story, activity and craft! Ages 3-5 *Nature Center*

JAN 8-9 WED-THU 9:30 OR 11AM

### **STORY TIME**

Enjoy stories about animals in the winter. Ages 5 and younger *Nature Center*

JAN 14 TUE 9:30, 10:30 OR 11:30AM

### **YOUNG EXPLORERS: FROSTY SCAVENGER HUNT**

Enjoy a winter scavenger hunt and win a prize. Ages 5-12 *Nature Center*

JAN 20 MON 12–2PM

# FEBRUARY

### **YOUNG EXPLORERS: AMOROUS ANIMALS**

Learn how animals care for each other and make a craft to take home. Ages 5-12

*Nature Center*

FEB 14 FRI 10AM OR 1PM

### **MAPLE SUGARING**

Learn how we can collect sap to make maple syrup and watch a demonstration to see how it's done. All ages *Barn Shelter*

FEB 23 SUN 12–2PM



INNISWOOD

## DECEMBER

### **PRESCHOOL IN THE GARDENS: WINTER AND WATERCOLOR**

Join us to sip cocoa and create some winter watercolor artwork. We'll take a walk for inspiration. Ages 3-5

*Greenhouse Multipurpose Center*

DEC 4 WED 9:30AM, 11AM, 1PM

### **PRESSED FLOWER HOLIDAY CARD WORKSHOP**

Artist Antonia Bojanina will show you how to create your own holiday cards using pressed leaves and flowers. Ages 18 and older

*Advance registration*

DEC 7 SAT 📞 10830401

### **LUMINARY WORKSHOP**

Bring your family to make your own luminary from household items. Materials provided. All ages *Innis House*

DEC 8 SUN 4:30PM

### **CHRISTMAS BIRD COUNT**

Search for birds and help collect data for the National Audubon Society Christmas Bird Count. Finish up inside with a warm drink while we view the birds at the feeders. Binoculars available. All ages *Innis House*

DEC 14 SAT 8-11AM

### **MEET THE ARTISTS**

Meet the members of the Fairfield County Photography Club and view their artwork at a reception. All ages *Innis House*

DEC 15 SUN 2-4PM

### **SOLSTICE WALK**

Join us in the gardens for a guided walk in celebration of the longest night of the year. All ages *Gardens Entrance*

DEC 21 SAT 6PM

### **LUMINARY WORKSHOP**

Bring your family to make your own luminary from household items. Materials provided. All ages *Innis House*

DEC 22 SUN 4:30PM

### **GARDEN SCHOOL: 2020 VISION**

Start looking to 2020 as we celebrate the new year while discovering the importance of animal vision. Ages 6-9 *Greenhouse Multipurpose Center*

DEC 30 MON 10AM-12PM

## JANUARY

### **METRO FIVE-0: LEVEL 2 COMMON WINTER BIRDS**

Learn about the most common winter birds on a guided walk. Afterward, warm up inside the Innis House with hot drinks. Binoculars available.

Ages 50 and older *Innis House*

JAN 4 SAT 10AM

### **LUMINARY WORKSHOP**

Bring your family to make your own luminary from household items. Materials provided. All ages *Innis House*

JAN 5 SUN 4:30PM

### **PRESCHOOL IN THE GARDENS: SCRATCH AND SNIFF GARDEN**

Explore our five senses and listen to some garden stories as we plant a mini sensory garden to enjoy through the winter. Ages 3-5

*Greenhouse Multipurpose Center*

JAN 8 WED 9:30AM, 11AM, 1PM

### **WINTER WELLNESS WALK**

Join us for an invigorating walk around the gardens. All ages

*Gardens Entrance*

JAN 11 SAT 10AM

### **BIRDFEEDER BINGO**

Join us for a game of BINGO with assistance from the birds that visit the feeders. All ages *Innis House*

JAN 11 SAT 2PM

### **MEET THE ARTIST**

Meet photographer John Bonnet and view his artwork at a reception. All ages *Innis House*

JAN 12 SUN 2-4PM

### **TOP 10 NATIVES IN WINTER**

Learn about the top native plants in the winter landscape.

All ages *Innis House*

JAN 18 SAT 10AM

### **47TH ANNUAL WINTER HIKE SERIES**

Join us for a 2-mile hike along the trails and garden paths.

All ages *Gardens Entrance*

JAN 26 SUN 2PM

### **TODDLER TIME IN THE GARDENS: FROZEN FUN**

Listen to a story and enjoy some fun, frosty, frozen activities.

Ages 2 and younger *Greenhouse Multipurpose Center*

JAN 29 WED 10AM

# FEBRUARY

## 34TH ANNUAL QUILT SHOW

View quilts produced by members of the Columbus Metropolitan Quilters. Quilts can be viewed Saturday and Sunday 11am-4pm and Tuesday to Friday 8am-4:30pm. Members will be available to answer questions Saturday and Sunday. All ages *Innis House*

FEB 1-2 SAT-SUN 11AM-4PM

FEB 4-7 TUE-FRI 8AM-4:30PM

FEB 8-9 SAT-SUN 11AM-4PM

## HOW-TO FOR HOUSE PLANTS

Come learn how to maintain the plants that are inside your home this winter. All ages

*Greenhouse Multipurpose Center*

FEB 1 SAT 10-11AM

## PRESCHOOL IN THE GARDENS: CARDINALS

Find out what's to love about our state bird and make a Valentine's Day craft to take home.

Ages 3-5 *Greenhouse Multipurpose Center*

FEB 5 WED 9:30AM, 11AM, 1PM

## METRO FIVE-0: LEVEL 2 WINTER WELLNESS WALK

Join us for an invigorating walk around the Gardens. Ages 50 and older *Gardens Entrance*

FEB 8 SAT 10AM

## COMMON WINTER BIRDS

Learn about birds on a guided walk and enjoy warm drinks after. Binoculars available.

All ages *Gardens Entrance*

FEB 15 SAT 10AM

## GARDEN SCHOOL: TRACKS AND SCAT

Investigate evidence left behind by the critters of Inniswood and see if you have what it takes to become a nature detective. Ages 6-9

*Greenhouse Multipurpose Center*

FEB 17 MON 10AM-12PM

## INNISWOOD BOOK CLUB

Join us for a discussion of this quarter's book, "Out of the Woods: Seeing Nature in the Everyday" by Julia Corbett. Ages 18 and older

*Innis House*

FEB 22 SAT 2PM

## MEET THE ARTIST

View the photography artwork of Inniswood's monthly artist, Doug Askew, at a reception.

All ages *Innis House*

FEB 23 SUN 2-4PM

## SCOUT DAY: BROWNIES: WOW JOURNEY

Join as we discover how wetlands work and how water travels. Ages 6-8

*Advanced registration*

FEB 29 SAT 📞 10832201

PRAIRIE OAKS

## DECEMBER

### CHRISTMAS BIRD COUNT

Calling all birders of every level! Come participate in the nation's longest-running community science bird project that fuels Audubon's work throughout the year. All ages *Park Office*

DEC 28 SAT 8:30–10:30AM

## JANUARY

### 47TH ANNUAL WINTER HIKE SERIES

Enjoy a 1-, 3- or 5-mile hike around the lakes, through the prairie and along the banks of Big Darby Creek. All ages *Darby Bend Lakes*

JAN 12 SUN 2–4PM



ROCKY FORK

## DECEMBER

### SEASONS AND STORIES: GOODBYE AUTUMN, HELLO WINTER!

Join us for some stories about nature and animals in winter! Following the stories will be a 1-mile hike on the paved trail and warm drinks! Families are encouraged to bring blankets! Ages 6 and younger *Millstone Shelter*

DEC 13 FRI 10AM

## JANUARY

### SEASONS AND STORIES: LET IT SNOW!

Join us for some stories about nature and animals in winter! Following the stories will be a 1-mile hike on the paved trail and warm drinks! Families are encouraged to bring blankets! Ages 6 and younger *Millstone Shelter*

JAN 17 FRI 10AM

### WINTER HAWKS

Search for winter hawks on a 1.5-mile hike. All Ages

*Rocky Fork Bulletin Board*

JAN 26 SUN 9-10AM

## FEBRUARY

### SEASONS AND STORIES: A WINTER WALK

Join us for some stories about nature and animals in winter! Following the stories will be a 1-mile hike on the paved trail and warm drinks! Families are encouraged to bring blankets! Ages 6 and younger *Millstone Shelter*

FEB 14 FRI 10AM

SCIOTO AUDUBON

## DECEMBER

### **PRESCHOOL STORY TIME**

Bring your little ones for a nature-inspired story or two. Ages 3-5

*Grange Insurance Audubon*

EVERY THU & SAT 10–11AM

### **WEEKLY BIRD HIKE**

Search for birds in the park. All ages *Grange Insurance Audubon*

EVERY SAT 10–11:30AM

## JANUARY

### **PRESCHOOL STORY TIME**

Bring your little ones for a nature-inspired story or two. Ages 3-5

*Grange Insurance Audubon*

EVERY THU & SAT 10–11AM

### **WEEKLY BIRD HIKE**

Search for birds in the park. All ages *Grange Insurance Audubon*

EVERY SAT 10–11:30AM

### **47TH ANNUAL WINTER HIKE SERIES**

Enjoy a 1- or 2-mile hike along the Greenway and park trails.

All ages *Climbing Wall*

JAN 18 SAT 10AM–12PM

## FEBRUARY

### **PRESCHOOL STORY TIME**

Bring your little ones for a nature-inspired story or two. Ages 3-5

*Grange Insurance Audubon*

EVERY THU & SAT 10–11AM

### **WEEKLY BIRD HIKE**

Search for birds in the park. All ages *Grange Insurance Audubon*

EVERY SAT 10–11:30AM

SCIOTO GROVE

## FEBRUARY

### 47TH ANNUAL WINTER HIKE SERIES

Enjoy a 1- or 2-mile hike along the Scioto River. All ages *Arrowhead Shelter*

FEB 2 SUN 2–4PM

### KIDS, PARENTS AND GRANDPARENTS: WINTER FUN

Join us for some fun seasonal activities. We may go outside, weather permitting. Ages 3 and older *The Grove*

FEB 7 FRI 1–3PM

## SHARON WOODS

# DECEMBER

### HAPPY TAILS-N-TRAILS

Bring your canine companion for a 2-mile hike followed by a doggie treat.

All ages [Apple Ridge Bulletin Board](#)

DEC 8 SUN 2PM

### FAST-PACED ADULT FULL MOON HIKE

Take a fast-paced 2.8-mile hike along paved and natural surface trails.

Ages 18 and older [Apple Ridge Bulletin Board](#)

DEC 11 WED 5:15PM

### AUDUBON CHRISTMAS BIRD COUNT

Search for birds on- and off-trail for the National Audubon Society's Christmas Bird Count. Tally your results over a cup of hot cocoa.

All ages [Schrock Lake Restrooms](#)

DEC 14 SAT 10AM

### GO WILD KIDS CLUB: HOLIDAY CRAFTS

Celebrate the season by creating a few works of art to gift or share.

Ages 5-12 [Spring Hollow](#)

DEC 19 THU 6PM

### CHRISTMAS FOR THE CRITTERS

Stop by to create a treat for backyard wildlife. All ages

[Spring Hollow](#)

DEC 20 FRI 10AM-12PM

### LANTERN STROLL

Candle lanterns will light the way on a 1-mile stroll through the woods on the winter solstice. All ages [Schrock Lake Restrooms](#)

DEC 21 SAT 5:30PM

### PRESCHOOLERS: NEW YEAR'S EVE OPEN HOUSE PARTY

Stop by anytime to celebrate New Year with games, activities and crafts.

Ages 3-5 [Spring Hollow](#)

DEC 31 TUE 10AM-2PM

# JANUARY

### FAMILY FUN: CABIN FEVER RELIEVER

Drop by for winter crafts and activities. Ages 3-12 [Spring Hollow](#)

JAN 3 FRI 10AM-2PM

### GO WILD KIDS CLUB: OFF-TRAIL ADVENTURE

Explore the natural play area forest. Ages 5-12 [Natural Play Area](#)

JAN 4 SAT 2PM

### FAST-PACED ADULT FULL MOON HIKE

Take a fast-paced 2.8-mile hike along paved and natural surface trails.

Ages 18 and older [Apple Ridge Bulletin Board](#)

JAN 8 WED 5:45PM

### 47TH ANNUAL WINTER HIKE SERIES

Enjoy a 2- or 4-mile hike through fields and forests. Hot soup and drinks served. All ages [Maple Grove Bulletin Board](#)

JAN 11 SAT 10AM

### HOMESCHOOLERS: WHOOO COOKS FOR YOUUU?

Learn about Ohio's owls through hands-on activities. Ages 6-12

[Spring Hollow](#)

JAN 15 WED 10-11:30AM OR 1-2:30PM

### SCOUT DAY: WEBELOS INTO THE WOODS

Scouts will work on requirements towards the Into the Woods achievement. Ages 10-11 [Advanced registration](#)

JAN 19 SUN 📞 10521801

### NATURAL PLAY AREA ADVENTURES: FORT BUILDING

Build a fort using natural materials found off-trail. All ages [Natural Play Area](#)

JAN 20 MON 1PM

### METRO FIVE-0: LEVEL 1 LAUGHTER IN THE LODGE

Joyce Johnson, from the Breathing Association, will show you exercises to improve your breathing along with laughter yoga to improve your mood. No mats or experience necessary. All activities can be done while sitting.

Ages 50 and older [Spring Hollow](#)

JAN 22 WED 1PM

### HAPPY TAILS-N-TRAILS

Bring your canine companion for a 2-mile hike followed by a doggie treat.

All ages [Apple Ridge Bulletin Board](#)

JAN 25 SAT 10AM

### PRESCHOOLERS: SLUMBER PARTY

Wear your pajamas, bring a stuffed animal and make a hibernation house for it. Ages 3-5 [Spring Hollow](#)

JAN 30 THU 9:30AM, 11AM, 1PM

JAN 31 FRI 9:30AM, 11AM, 1PM



# FEBRUARY

## **FAST-PACED ADULT FULL MOON HIKE**

Take a fast-paced 2.8-mile hike along paved and natural surface trails. Ages 18 and older

*Apple Ridge Bulletin Board*

FEB 8 SAT 6:15PM

## **HOMESCHOOLERS: SNOW MUCH FUN**

Discover properties of snow and how animals cope with winter. Ages 6-12 *Spring Hollow*

FEB 11 TUE 10–11:30AM OR 1-2:30PM

## **GREAT BACKYARD BIRD COUNT**

Stop by and add birds to our list in this nationwide citizen science effort. All ages

*Spring Hollow*

FEB 15 SAT 10AM–1PM

## **GO WILD KIDS CLUB: KINDNESS ROCKS**

Help spread kindness by decorating rocks and hiding them for someone else to find.

Ages 5-12 *Spring Hollow*

FEB 15 SAT 2PM

## **GEOCACHING HIDE-N-SEEK**

Learn to use a GPS unit as you hide and seek items off-trail in the natural play area. All ages

*Natural Play Area*

FEB 17 MON 1PM

## **HAPPY TAILS-N-TRAILS**

Bring your canine companion for a 2-mile hike followed by a doggie treat. All ages

*Apple Ridge Bulletin Board*

FEB 22 SAT 4PM

## **PRESCHOOLERS: CRAZY CANINES**

Learn about our furry friends through activities and a craft. Ages 3-5 *Spring Hollow*

FEB 26 WED 9:30AM, 11AM, 1PM

FEB 27 THU 9:30AM, 11AM, 1PM

## **LEAPIN' LANTERN STROLL**

Carry lanterns on a 1-mile walk to celebrate an extra day in February. All ages

*Apple Ridge Bulletin Board*

FEB 29 SAT 6:45PM

SLATE RUN FARM

## DECEMBER

### CHRISTMAS IS COMING

Help decorate the farmhouse in Victorian style. String popcorn and make an ornament to decorate our tree or take home. All ages *Farmhouse*

DEC 7 SAT 1–3PM

### PRESCHOOLERS STORYTIME: KEEPING WARM

Learn how 1880s families stayed warm and prepared for winter with a story and activities. Ages 3-5 *Farmhouse*

DEC 11 WED 10:30AM

### ADULTS: PREPARING FOR WINTER

Tour the farmhouse and barn and find out how an 1880s family prepared for the cold and finish next to the woodstove with a hot beverage.

Ages 18 and older *Farmhouse*

DEC 11 WED 1PM

### HOMESCHOOLERS AT THE FARM: READY FOR WINTER

Find out how an 1880s farm family prepared for the cold and blustery winter weather. Ages 6-12 *Farmhouse*

DEC 12 THU 1PM

### FILLING THE FARM LARDER

Hog butchering is a seasonal activity that provided much of the meat for the coming year on an 1880s farm. Watch the farmers as they clean and prepare the hog carcass. All ages *Farmhouse*

DEC 14 SAT 9AM–2PM

DEC 15 SUN 11AM–2PM

### 'TIS THE SEASON

Take a break from the holiday bustle with a quiet stroll around the farm. String popcorn and make an ornament to take home. All ages *Farmhouse*

DEC 21-22 SAT-SUN 1–3PM

### HOLIDAY BREAK WORKDAY

Help with farm chores, visit the animals and warm up next to the woodstove. *Farmhouse*

DEC 27 FRI 1–3PM

### SMOKED, SALTED, PICKLED & PRESERVED

Learn how fruits, vegetables and meats were preserved before the days of artificial refrigeration. The smokehouse will be operating.

All ages *Farmhouse*

DEC 28 SAT 1–3PM

## FEBRUARY

### MAPLE TIME

Sample this sweet treat and learn about making maple syrup the 1880s way. A short hike to the sugarbush leaves the farm at 1 and 2pm. Sap collecting and boiling is dependent on the weather but all other activities will take place. Call 614.833.1880 to see if the sap is flowing.

All ages *Farmhouse*

FEB 22-23 SAT-SUN 1–3PM

FEB 29 SAT 1–3PM

SLATE RUN

47TH ANNUAL WINTER HIKE SERIES

Take a 2.5- or 5-mile hike through woods and fields. All ages *Buzzards Roost Picnic Area*

FEB 16 SUN 2-4PM

## THREE CREEKS

# DECEMBER

### NATURAL WREATH MAKING

Make a wreath from natural materials to take home and enjoy. Program will be held in our maintenance shop if we have poor weather. All ages [Confluence Area](#)

DEC 1 SUN 2–3:30PM

### HIKE ALONG THE CREEK

Enjoy a leisurely 2-mile walk along the creek in search of winter wonders. All ages [Confluence Area](#)

DEC 7 SAT 10–11:30AM OR 1:30–3PM

### CALLING ALL KIDS: BUILD A GIANT NEST

Help build a huge nest out of materials found in the natural play area. All ages [Confluence Area](#)

DEC 8 SUN 2PM

### PRESCHOOLERS: ANIMAL STORIES

Bring your favorite stuffed animal and listen to stories about their wild cousins. Ages 3-5 [Heritage Nature Center](#)

DEC 10 TUE 10AM

### WALK TO THE EAGLE NEST

Learn about our national bird and take a 2-mile off-trail walk to visit their nesting site. All ages [Confluence Area](#)

DEC 14 SAT 10–11:30AM

### METRO FIVE-0: LEVEL 3 WALK TO THE EAGLE NEST

Learn about our national bird and take a 2-mile off-trail walk to visit their nesting site. Ages 50 and older [Confluence Area](#)

DEC 15 SUN 1–2:30PM

# JANUARY

### WINTER PHOTO WALK

Search for winter's stark beauty as you photograph field and forest. All ages [Confluence Area](#)

JAN 5 SUN 1:30–3PM

### WINTER TREE ID WALK

Learn to identify trees by their twigs and bark. All ages [Confluence Area](#)

JAN 12 SUN 2PM

### PRESCHOOLERS: BEAR NECESSITIES

Engage in activities and listen to stories about bears. Teddy bears welcome to attend. Ages 3-5 [Heritage Nature Center](#)

JAN 15 WED 10AM

### CALLING ALL KIDS: CRITTER SCENE INVESTIGATION

Be a science investigator and use evidence to solve wildlife mysteries. Meant for older school age children but younger kids can participate with help from parents or older siblings. Ages 6-15 [KidSpace](#)

JAN 20 MON 9:30 OR 11AM

### METRO FIVE-0: LEVEL 3 OFF-TRAIL WANDERING

Take a 2.5-mile on-and-off trail hike through field and forest to visit rarely seen parts of the park. Ages 50 and older [Confluence Area](#)

JAN 26 SUN 2–3:30PM

# FEBRUARY

### TRACKS AND TRAILS

We'll learn about animal tracks as we search for tracks and signs. All ages [Confluence Area](#)

FEB 8 SAT 2PM

### OWLS OF FEBRUARY

Learn about Ohio's owls as we walk through the woods and try to lure our resident barred owls in with calls. All ages [Confluence Area](#)

FEB 8 SAT 6PM

### THE COYOTES AMONG US

Learn about our secretive neighbors as you wander off-trail in search of signs. All ages [Confluence Area](#)

FEB 9 SUN 2PM

### 47TH ANNUAL WINTER HIKE SERIES

Take a 1-, 3- or 5.6-mile hike along the creeks, followed by hot drinks and food. All ages [Confluence Area](#)

FEB 15 SAT 10AM–1PM

### HOMESCHOOLERS: DISSECTING AN OWL PELLET

Learn about owls, food webs and adaptations by dissecting an owl pellet. Ages 6-15 [KidSpace](#)

FEB 20 THU 1PM

### CALLING ALL KIDS: EXPLORATION AND CAMPFIRE

Explore the natural play area then toast treats over a campfire. All ages [Confluence Area](#)

FEB 22 SAT 11:30AM–1PM

### WOODCOCK WATCH

Celebrate leap day by taking a 1.5-mile round trip walk to watch the aerial courtship display of this unusual bird. All ages [Confluence Area](#)

FEB 29 SAT 6–7:30PM